



**IMA SCHELLING**  
GROUP

800.711.9824  
301 Kitty Hawk Drive, Morrisville, NC 27560  
[www.imaschelling.us](http://www.imaschelling.us)

## **REFURBISHED SCHELLING PANEL SAW**

**Year 2007 fh6 430 manual load**

### **Machine # 221.065**

- Front load machine
- Maximum cutting length: 4330 mm
- Maximum cutting width: 4100mm
- Book height 4.9"
- Eleven clamps
- Call for pricing

### **Scope of Refurbishment:**

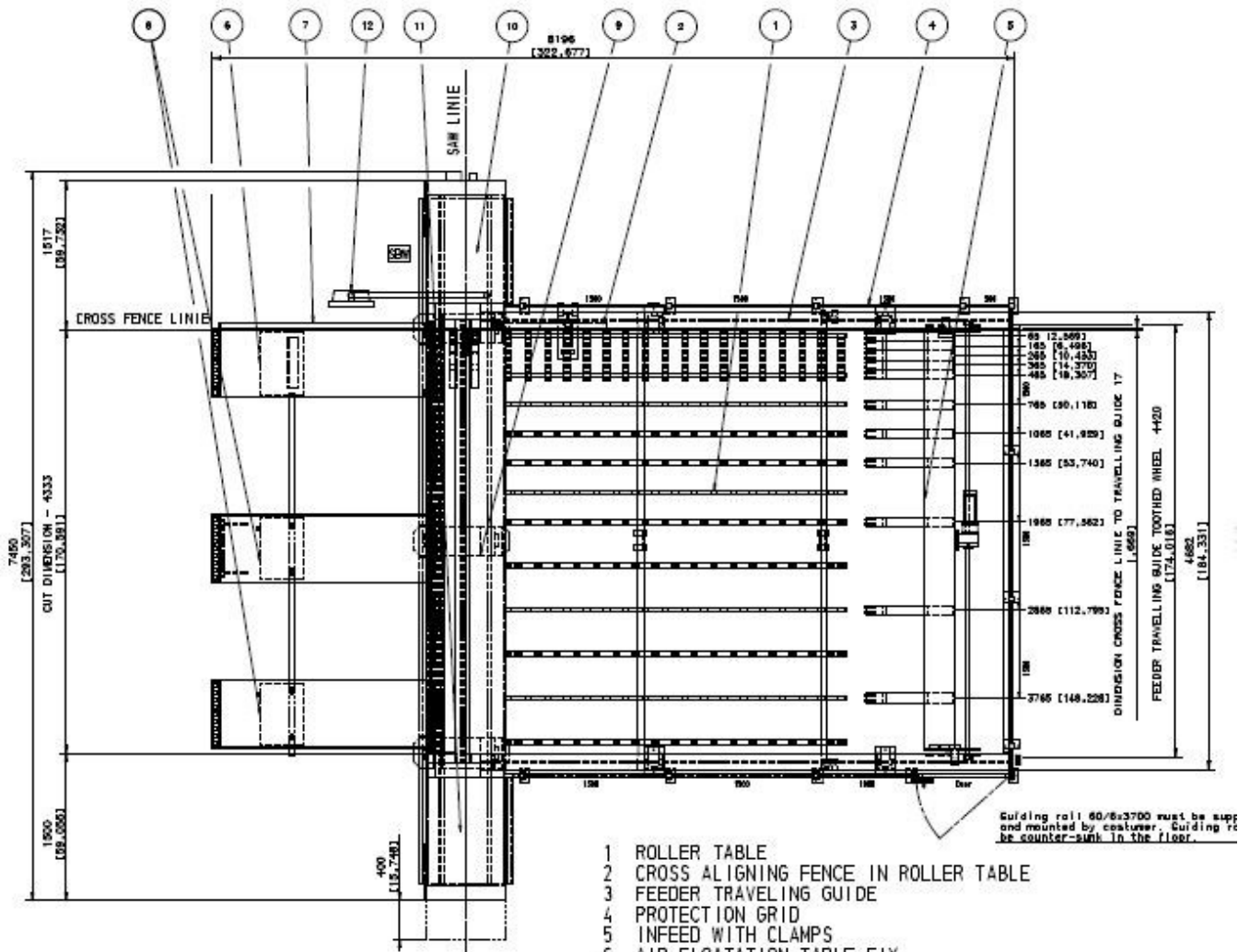
- Replace all cables in wire harness of saw carriage and feeder
- Replace bearings of saw carriage and realign
- Replace bearings of feeder and realign
- Replace rubber of pressure beam and table lips
- Detailed cleaning of machine
- Repaint scratched areas
- Replace or repair any damaged items
- New 17 inch flat screen display



**IMA SCHELLING**  
GROUP

800.711.9824  
301 Kitty Hawk Drive, Morrisville, NC 27560  
www.imaschelling.us

## SCHELLING fh6 430 M PANEL SAW



- 1 ROLLER TABLE
- 2 CROSS ALIGNING FENCE IN ROLLER TABLE
- 3 FEEDER TRAVELING GUIDE
- 4 PROTECTION GRID
- 5 INFEED WITH CLAMPS
- 6 AIR FLOATATION TABLE FIX
- 7 CROSS ALIGNING FENCE AIR FLOATATION TABLE
- 8 AIR FLOATATION TABLE MOVEABLE
- 9 SAW MACHINE fh6 430
- 10 CONTROL CABINET 1
- 11 CONTROL CABINET 2
- 12 CONTROL DESK